



# Don't Play With Danger

Lead can harm your child

Childrens jewelry, cribs, backpacks and many other products for babies and children may be unsafe because they have **lead**.

**Lead** can harm your child's brain and body and keep them from growing and developing normally.

**Lead** can get into a child's body from normal behavior, like putting an object or their hands into their mouth.



Find out which products have lead!

TEXT the word KIDS or NINOS for a reply in Spanish and product name to 30644

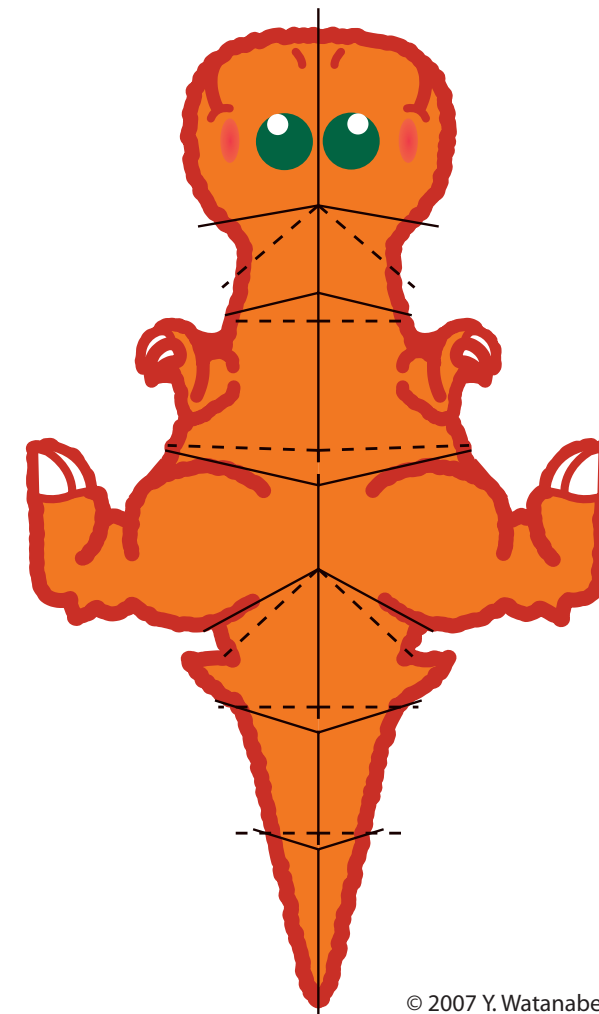
GO TO [www.healthystuff.org](http://www.healthystuff.org) for more info

CALL 1-800-638-2772 for product recalls

PUNCH OUT AND PUT THIS CARD IN YOUR WALLET!

## Snip N Fold Baby Dinosaur

JUST CUT ME OUT AND FOLD ALONG THE LINES!



## What could have lead?



### Vinyl and Plastic

Lead can be in soft plastic items, like backpacks, lunch boxes, diaper bags, balls or toys from vending machines.



### Metal Pieces

Eyes, metal buttons, noses, and zippers on stuffed animals or dolls can be made of lead.

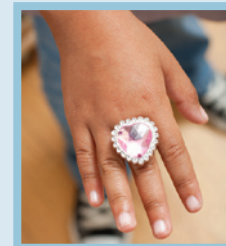
Even if they don't have lead, they are dangerous because a child could choke on them.



### Paint

Lead can be in paint on wood, metal, ceramic or fabric.

Toys like painted blocks, metal cars and trucks, ceramic items like tea sets, and antique metal toys may have lead.



### Children's Jewelry

Children's jewelry can be made with lead or have small lead pieces.

It is dangerous if put into the mouth or swallowed.

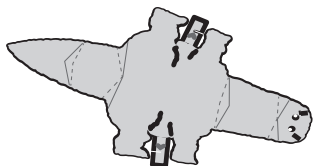
Lead can be found in many children's products, new and used.

Lead can harm your child.

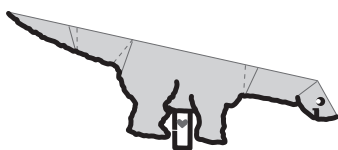
Avoid products with plastic, vinyl, chipped paint, metal eyes, noses, and zippers.

Get your child tested for lead.

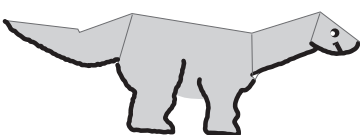
PUNCH OUT AND PUT THIS CARD IN YOUR WALLET!



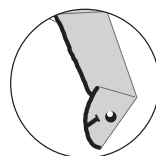
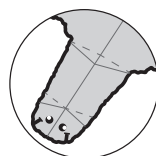
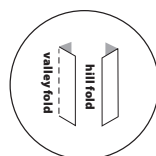
- 1 Cut the animal out, following the outlines of its body.



- 2 Fold the animal in half lengthwise first. Next make the other folds according to guidelines. Start folding at the tail.



- 3 Continue folding either up or down (solid lines fold down, dashed lines fold up) until you reach the head. Your animal is complete!



Snip N Fold Baby Dinosaur  
INSTRUCTIONS

## What you can do to protect your child from lead:

- **Check all babies and children's products** you have at home, at your day-care, or babysitter's

**TEXT** the word **KIDS** or **NINOS** for a reply in Spanish and name of a product to 30466 to find out if the product has been tested for lead.

**GO TO** [www.healthystuff.org](http://www.healthystuff.org) and look up products.

**CALL 1-800-638-2772** to find out if a product has been recalled by the Consumer Product Safety Commission

- **Check hand-me-downs and gifts.** Products that have lead may still be in stores, at second hand shops, garage sales or swap meets.
- **Choose toys that are made from wood** or cloth and do not have have paint, varnish, zippers or metal pieces.
- **Throw away toys that are damaged,** have cracked or peeling paint, or bite marks.
- **Don't let young children wear jewelry.** It is dangerous if swallowed or put into the mouth.
- **Wipe toys with a damp cloth** every few days to clean off dust.
- **Wash children's hands with soap and water often** and always before eating and sleeping.
- **Have your child tested for lead** at least once before they are 6 years old.

**Need help getting your child tested for lead? Contact your local Childhood Lead Poisoning Prevention Program.**

